



ECO-FRIENDLY

CLEANING SYSTEM

 **RAYPATH**[®]
INTERNATIONAL

We have been building trust
for nearly 30 years

TABLE OF CONTENTS



Raypath International Sp. z o.o. Sp. k.
Rząska, ul. Nad Potokiem 7A
30-199 Kraków, PL

NIP 679-293-55-53

telephone no. +48 12 625 74 00
e-mail: centrala@ray.pl

www.raypath.eu

 raypath.international

 raypath.international

05	NANO SILVER TECHNOLOGY
09	CLEANING CLOTHS AND GLOVES
10	CHARACTERISTICS AND COMPOSITION
16	APPLICATION
18	SETS
18	House Set
20	Animals Set
21	Car Set
22	CLEANERS
22	White material
24	Beige material and white material Nova
26	Pink material
30	Sunbeam cleaners
32	SUNBEAM SPORT
35	ECOBODY CARE
36	Face Glove
37	Face Cleaner
38	Body Cleaner
39	Body Glove
40	Face cream Golden Ray
42	Natural soap with nanosilver
43	Silver Water
45	THE RITUAL
46	Natural toothpaste
48	Shampoo and Conditioner for normal hair
50	Shampoo and Conditioner for dry and damaged hair
53	NANOSILVER POWER
	HOUSE LIQUIDS
54	Natural Dishwasher Gel
55	Natural Toilet Bowl Cleaner
	WASHING LIQUIDS
56	Concentrated Fabric Softener
57	Concentrated Washing Liquid White
58	Concentrated Washing Liquid Colour
59	Concentrated Washing Liquid Black
61	SMART DIETARY SUPPLEMENTS
62	Vitamin C
64	Detox
66	Focus
68	Colostrum
71	RAYPATH FOR THE EARTH

Discover a world full
of exceptional organic products
with **Raypath International**



30 YEARS
OF EXPERIENCE

We
can



ZERO WASTE

SAVE
THE WORLD
WITH
**RAYPATH
INTERNATIONAL
PRODUCTS**



ENERGY-EFFICIENT
PRODUCTION



WE CARE ABOUT
THE ENVIRONMENT

NANO SILVER TECHNOLOGY

For almost 30 years we have been creating environmentally friendly products. We are committed to creating environmental awareness and eliminating the hazards of using chemicals. Join our global RAYPATH INTERNATIONAL community today and enjoy the beauty of our Planet!

We offer innovative cleaning products as well as biodegradable washing liquids, dishwashing liquids and toilet bowl cleaners.

With your health in mind, we have also developed a line of ECOBody Care products for face and body that are safe for all skin types.

Following your needs we have supplemented our product range with dietary supplements and hair care products based on natural ingredients.





ENVIRONMENTALLY
SAFE

10 eko

STEPS

WHY
CHOOSE
RAYPATH
INTERNATIONAL?



RECYCLING SYSTEM



NATURAL INGREDIENTS



We are **Zero Waste** - our cleaning products work with just water!



For almost 30 years, we have been producing **ecological cleaning cloths** that contribute to reducing the consumption of chemicals in households!



We promote **waste segregation** in order to give trash a new life. Thanks to our recycling system, you can replace your old cleaner with a new one for half the price.



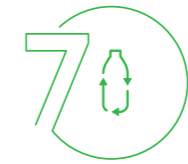
We do not test on animals.



We have **eliminated the plastic** in which our cleaners were wrapped, and we replaced plastic bags with paper ones.



Our dietary supplements are based on **natural ingredients**.



Bottles of our Nanosilver Power line products are **made of recycled plastic**, which allows us to reduce our environmental footprint.



We practice **sustainable, energy-efficient production** at production sites whose ecology management procedures are GMP-certified.



Our washing liquids **do not contain harmful chemicals**, such as phosphates, borates, NTA, formaldehyde, EDTA, chlorine-organic compounds or PVC.



We use only natural, highly biodegradable ingredients, so the Nanosilver Power products are **environmentally safe**.



NOT TESTED
ON ANIMALS





ANTIBACTERIAL



EFFICIENT

CLEANING IN HARMONY WITH NATURE CLEANING CLOTHS AND GLOVES

Raypath microfibre cleaning cloths are the cloths for special tasks. Perfectly clean surfaces and an almost 100% reduction in bacteria are possible with them!

The dry cleaner uses electrostatic forces to attract dust, dirt and pet hair. The wet cleaner binds dirt particles between the fibre wedges due to capillary forces. The dirt does not remain on the surface of the cleaner, but is trapped deep within the fibres. What does it do? Cleaning does not require frequent rinsing of the cleaner, and no excess moisture remains on the cleaned surface.



RAYPATH[®]
INTERNATIONAL



0% WASTE



100% EFFECTIVE

CLEANING CLOTHS RAYPATH



NANO SILVER TECHNOLOGY

Discover an eco-friendly cleaning system that will delight you with its performance, all with just water!

It is natural that each of us wants to live in a clean, fragrant and pleasant environment. Unfortunately, achieving perfect cleanliness, as well as avoiding the spread of dust, dirt, viruses, bacteria and other microorganisms, requires the use of a great number of chemical agents. Their task is to destroy all microorganisms, which has a negative impact on our body.

Products based on solvents, acids and strong chemicals with the addition of a clearly perfumed ingredient on the one hand help to fight dirt, but on the other hand they seriously damage our health and the environment.



HEALTHCARE

Thanks to the Nano Silver Technology you can resign from using chemicals, normally used in households, that are hazardous to health. These chemicals are very often toxic and more harmful than the dirt, dust or microorganisms they remove. More and more often these agents cause various types of allergies, because their impact on our body is long-lasting. **Raypath cleaners clean with just water, which has a neutral effect on human health, and thus they are safe even for those of you who suffer from allergies.**



SAVINGS

A one-time investment in Raypath cleaners translates into their many years of service life, and thus in savings in a broader perspective. **Thanks to our technology, you will save the money you used to spend on chemicals.**



CONVENIENCE, TIME AND ENERGY SAVINGS

Nano Silver Technology makes **cleaning 50 to 70% faster and easier** than the traditional way. In addition, the cleaned surface is less susceptible to soiling, which results in considerable time savings.



PROTECTING NATURAL ENVIRONMENT

Nowadays, chemicals are ubiquitous and widely available, which contributes to environment pollution. Chemicals can be found in every home, and their consumption has increased significantly in recent years. As a result, more and more poisonous substances end up in the ecosystems. Willing to protect our planet, we have created the Nano Silver Technology, which is based on the use of only water. Thanks to it, **less chemical pollutants enter the environment.**

MICROFIBRE AND NANOSILVER TECHNOLOGY

The unique cleaning properties of the Nano Silver Technology system are owed to the very structure of the cleaners.

This is because they consist of microfibrils with a thickness of 20 micrometres thick and their structure resembles a human hair. This means that their profile is a groove into which dirt penetrates, concentrates and does not transfer onto the material being cleaned. During washing, dirt is very easily rinsed out and as a result the fibres remain clean. As a result of use, their structure is disturbed, it opens up, thanks to which the ability to absorb dirt increases. The material even absorbs unpleasant odours.

The silver nanoparticles incorporated in the fibres clearly boast bacteriostatic properties. They are well capable of neutralising hundreds of pathogenic viruses, bacteria, fungi, and other microorganisms by affecting their DNA. Overall efficacy of the cleaners was proven to have remained unaltered even after several dozen washes.



EXPERT ANALYSIS

CHEMICALS VS NANO SILVER TECHNOLOGY

In order to prove the ability of the Nano Silver Technology system to remove various contaminants that host bacteria, yeasts, and fungi, a series of model laboratory tests were carried out in the Collegium Medicum, Jagiellonian University, and at the Dept. of Commodities Studies, Cracow University of Economics. The results put overall effectiveness of the Nano Silver Technology cleaning system well on a par with that of the select chemical agents under study, and in some cases even acknowledged its superiority. The products boast official endorsements of the Institute of Public Health PZH, recognized in all EU countries.

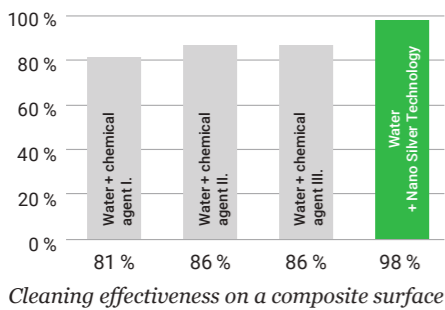
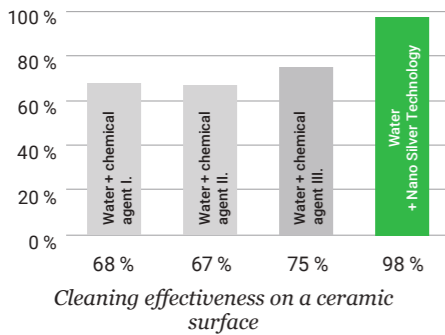
The tests at issue were carried out on the two most common types of surfaces, i.e. composite and ceramic ones. A composite surface was me-

ant to emulate a regular kitchen worktop, while the ceramic one - porcelain, glass, sanitary ceramics, tiling, etc. Artificial dirt (a mixture of dust, soot, coal dust, silicates, and grease) was applied to both surfaces. A traditional cleaning method consisted in making use of a cotton cloth soaked in an aqueous solution of a chemical agent designed for cleaning surfaces. The three most popular chemical agents from different manufacturers were used. After cleaning with Nano Silver Technology and chemical cleaning agents, the resultant reduction in volume of residual bacteria, yeasts, and fungi was assessed by the investigators.

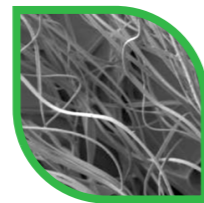
The structure of a microfibre cleaner makes it possible to effectively arrest dust, microorganisms, grease, and any other contaminants, so as to prevent spreading them on the surface under cleaning. With use, the surface of the fibres becomes rough, which actually increases their absorption capacity. A sponge

may be a good substitute for a cleaner with regard to any regular kitchen cleaning methods aided by chemical agents. In the rough part of the sponge, the fibre mesh is very dense and reinforced with an abrasive material whose sole purpose consists in lifting the dirt off a surface. A sponge may therefore absorb the dirt in its dense structure, although it would still remain on the surface of the fibres and would in due

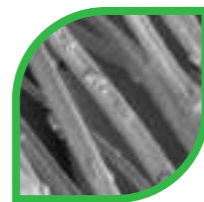
course be further distributed during the cleaning. It is pretty hard to have the dirt removed from the fibres, which contributes to the proliferation of all sorts of bacteria, fungi, and other microorganisms. Besides, the material becomes brittle over time, loses its elasticity, and eventually disintegrates.



CLEANER RAYPATH

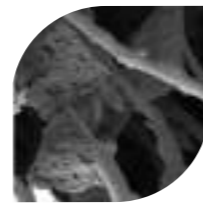


CLEANER RAYPATH NEW
(microfibre mesh)

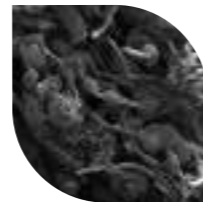


USED CLEANER RAYPATH
(microfibre groove with captured dirt)

SPONGE

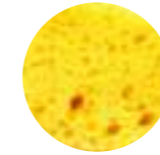


BRAND-NEW SPONGE
(lumps of abrasive material)

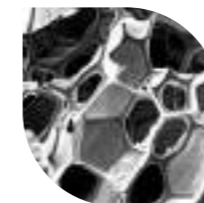


USED SPONGE
(disintegrating fibre mesh with captured dirt)

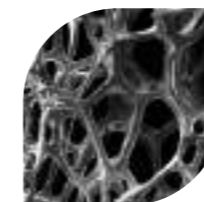
SPONGE



The porous part of a sponge consists of strengthening membranes which make it resilient. Even after a short use, though, the membranes get ripped up and the dirt and various contaminants begin accumulating in the cavities of the material. As a sponge is kept mostly in a humid environment, this makes it a **perfect location for a rapid proliferation of bacteria, fungi, and microorganisms.**

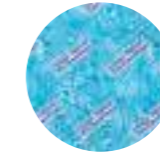


BRAND-NEW SPONGE
(a mesh of strengthening membranes)

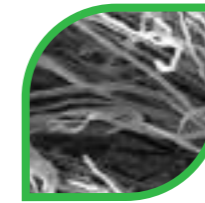


USED-UP SPONGE
(damaged mesh of strengthening membranes with embedded dirt)

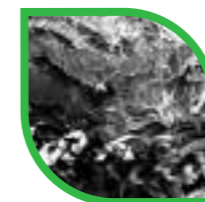
SUNBEAM CLEANER



Sunbeam is made of microfibres with an average thickness of 10 µm. It owes its extraordinary adsorption properties to its specific construction. The microfibres are pressed into each other in three layers, but the outer fibres are thicker than the middle fibre. This allows water and dirt to penetrate the material, where they are contained and the **surface of the material remains clean.**

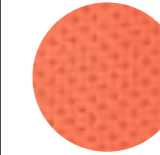


BRAND-NEW SUNBEAM CLEANER
(a dense microfibre mesh)

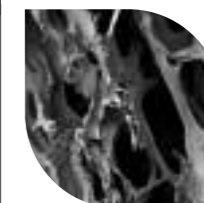


USED-UP SUNBEAM CLEANER
(damaged microfibre structure actually increasing its effectiveness)

A SPONGY KITCHEN WIPE



A spongy kitchen wipe has a dense, resilient, highly porous structure well capable of absorbing liquids. After a short period of use, though, the material starts losing its properties, the pores become brittle, weak, and soon become the location where steadily increasing amounts of contaminants are captured, while a **humid environment appreciably aids proliferation of all sorts of pathogenic microorganisms.**



BRAND-NEW SPONGY KITCHEN WIPE
(porous structure of the material)



USED-UP SPONGY KITCHEN WIPE
(damaged porous structure with captured dirt)

APPLICATION

Nano Silver Technology cleaners should only be used with clean water, with no contact with any chemical agents. The actual temperature of the water does not impact on their effectiveness in any way.

APPLICATION:

Before the first application, the cleaners should be washed at least 3 times in an automatic washing machine using a short washing cycle at the temperature of up to 60°C (pink cleaners should be washed only once). In this way, any residual fibre clippings would be rinsed out of them, while the fibres themselves would open up in water, and become ready for use.

Soiled cleaners should never be



Nano Silver Technology cleaners clean the surfaces only with water!

left out to dry, as their fibres may get damaged in result. They should first be soaked in clean water and then washed.

Wash by hand with Nano Silver antibacterial soap or in a washing machine at up to 60°C (using any washing powder). Do not use softeners or fabric conditioners. Avoid intensive drying, especially in automatic dryers or on radiators as the fibres may be damaged.

Avoid intensive drying in automatic dryers, or on radiators, as this may cause damage to the fibres. Use clean water and NanoSilver antibacterial soap when removing any heavy soiling, e.g. stains on fabrics, traces of felt-tip pens or ink, tar stains, glue, etc.

Use lemon juice to remove lime scale from sanitary ceramics, tiles, and water mixers, making sure to leave it on the surface for a while prior to scrubbing. It may also be used for cleaning jewellery, brass, and removing any rust stains.

Type of material

-  *White material*
-  *Beige material*
-  *Pink material*
-  *Sunbeam cleaner*



*Cleaning
without chemicals*

HOUSE CLEANING SET

A complete set of household cosmetics for comprehensive cleaning of all soiled surfaces (all types of floors, tiles, walls, wallpapers, glass, mirrors, etc.), kitchen and bathroom equipment (sink,

washbasin, bathtub, fixtures, household appliances), appliances: RTV and computer equipment, various home and office appliances.

Unlike traditional methods that use che-

micals, the Nano Silver cleaning technique developed by Raypath uses cleaners with just water. So what do you get? Firstly: faster, more effective and more cost effective cleaning. Secondly, no more chemicals and a weapon against various allergies and a concrete action for the protection of the ecosystem.

Take advantage of an eco-friendly solution, with guaranteed effectiveness, and your home will be cleaner and safer than ever before.



ANIMALS CLEANING SET

The Animals set was composed with our four-legged friends in mind. Properly selected products will allow you to take care of their proper hygiene and care.

The set includes cleaners that are designed for both dry and wet use, making them ideal for use at home or on trips.

High-quality glove materials are characterised by high durability. Additionally, their use will positively influence the condition of your pet's skin and coat, as they only require water (without the use of washing liquids which often cause allergic reactions and irritation).



CAR CLEANING SET

The Car Cleaning Set is a high-quality, eco-friendly kit that will allow you to give your car a complete wash without the use of soaps, shampoos and other auto-cosmetics that harm the environment.

The cleaners easily reach the most inaccessible places and also effectively deal with greasy surfaces without leaving streaks. The Car

Cleaning Set is ideal for cleaning the whole car, including its interior.

The cleaners are made of selected microfibrils of the right hardness - so they do not scratch the delicate varnished surface.

WHITE MATERIAL



White material boasts the best cleaning properties.

It breaks down any dirt and grease into the molecules that form an emulsion with water, subsequently removed with a Sunbeam cleaner. It is to be used well-soaked, for any surfaces highly tolerant of water, e.g. window frames, doors, hard floor coverings, linings, bathtubs, washbasins and other sanitary facilities, water mixers, glass surfaces, cookers, fume hoods,



REUSABLE



WORKS WITH JUST WATER



0% WASTE

*Absorbs unpleasant odours,
perfect for cleaning fridges
and microwave ovens*

APPLICATION

Cleaners should always be well soaked and wrung out before use. Then, using circular movements remove grease and dirt, and wipe off the resultant emulsion either with a moist or dry Sunbeam cleaner. Make sure to have them rinsed off in clean water now and again, while in the case of any heavy soiling, antibacterial soap might be used. To be washed manually with Nano Silver antibacterial soap added, or in an automatic washing machine at a temperature of up to 60°C, using any regular washing powder, with no rinsing liquids whatsoever. Not to be dried in automatic dryers, or on the radiators.



White glove

White floor cleaning pad



Window express

Mini white cleaner

kitchen sinks, kitchen worktops, crockery, car bodies, hubcaps, etc. It perfectly absorbs unpleasant odours and is therefore most suitable for cleaning fridges and microwave ovens, where chemical agents are not recommended. It may also be used for lifting off various stains from carpets, upholstery, clothing, and shoes. For cleaning windows, the

Window Express is recommended. After the cleaning, any residual water should be removed from a glass pane with a rubber blade scraper, to be then wiped off with a Sunbeam cleaner after each stroke. Sunbeam cleaner may also be applied to removing any residual water and dirt from the window frames.

BEIGE MATERIAL AND WHITE MATERIAL NOVA



The beige material works in a similar way to the white one. Since it has a lower fibre density, it binds less water, and so can be wrung out much better.

To be used wet, just perfect for cleaning the surfaces that might easily be damaged by excess water.

It can be used to clean all types of living room leisure furniture (upholstered with



REUSABLE



WORKS WITH JUST WATER



0% WASTE

just perfect for all non-waterproof surfaces



Beige floor cleaning pad

White floor cleaning pad NOVA

White glove NOVA

Beige glove

Mini white cleaner NOVA

APPLICATION

Cleaners should always be well soaked and wrung out before use. Then, using circular movements remove grease and dirt, and wipe off the resultant emulsion either with a moist or dry Sunbeam cleaner. Make sure to have them rinsed off in clean water now and again, while in the case of any heavy soiling, antibacterial soap might be used. To be washed manually with Nano Silver antibacterial soap added, or in an automatic washing machine at a temperature of up to 60°C, using any regular washing powder, with no rinsing liquids whatsoever. Not to be dried in automatic dryers, or on the radiators.

fabric, leather, artificial leather, etc.). Also all types of furnishings, wooden flooring, doors, parquet floors, cork tiling, marble, musical instruments, car interiors, headlights, jewellery, electronic equipment (TV, radio, mobile phone, computer, keyboard, etc.), live or artificial plants.

PINK MATERIAL



The pink material is designed to remove dust from all surfaces.

It creates an antistatic charge which attracts dust to the cleaner and thus prevents it from floating in the air. The antistatic charge also forms on the surface under cleaning which significantly slows down the process of spontaneous dust re-deposition.



- REUSABLE
- WORKS DRY
- 0% WASTE



APPLICATION

Only dry cleaners should be used. When cleaning, make sure to shake them off frequently enough to get rid of any accumulated dust. After the cleaning they should be shaken off thoroughly, or vacuumed. Depending on the extent of soiling, they should be washed now and again. To be washed manually with Nano Silver antibacterial soap added, or in an automatic washing machine at a temperature of up to 60°C, using any regular washing powder, with no rinsing liquids whatsoever. Not to be dried in automatic dryers, or on the radiators.

The **material may also be used for polishing.** It may be used for cleaning household furnishings, plants, electronic appliances, paintings, parquet floors, PVC floor tiles, car interiors, etc.

A COMPLETE CLEANING SET FOR THE FLOOR

The floor set consists of a frame and a telescopic pole. On the frame there is a clip with a Euro-lock in which the telescopic pole is seated.

1. Grasp the Euro-lock (1) on the sides and pull it out of the drawbar (2), insert the telescopic pole (6) into it, so that the holes in the pole overlap with the ones in the drawbar.
2. Slide the Euro-lock (1), into the holes; after a slight rotation of the pole, the lock will click into place.
3. Tighten the thread on the drawbar (2).
4. Use the thread on the telescopic pole (8) to adjust it to the desired length.
5. By pressing down the clip on the lock (3) loosen the frame arm (4), fit the floor cleaning pad into place, and then realign the frame arm, so that it locks securely afterwards.
6. The floor cleaning set is now ready for use.
7. Should it prove necessary to change the actual inclination of the frame (5), just fit in the articulated joint between the frame (6) and the telescopic pole (9).

WINDOW EXPRESS

To clean any high windows, use the cleaning set consisting of a Window Express, a cone, a joint, and a telescopic pole.

1. Press the spring on the sides of the articulated joint (9), and slide it into the opening of the telescopic pole (6).
2. Press the spring on the cone (7) and slide it into the opening of the articulated joint (on the opposite side of the telescopic pole).
3. Fit the Window Express onto the cone (7).
4. Adjust the telescopic pole (8) to its desired length using the thread.
5. The actual inclination of the Window Express may be adjusted as needed by changing the angle of the articulated joint (9).



SUNBEAM CLEANERS



A Sunbeam cleaner boasts an extremely high absorption capacity due to its dense fibre structure.

It removes water and emulsion residues resultant from the use of white and beige material, and in this way gives a perfect shine to any surface under cleaning. Makes it very easy to polish a variety of surfaces, e.g. windows, mirrors, lamps,



REUSABLE



WORKS WET AND DRY



0% WASTE

Makes it very easy to polish a variety of surfaces



Sunbeam Duo

Sunbeam Optic

Sunbeam XXL

water mixers, furnishings, ceramics, crockery, furniture accessories, car bodies, audio-video equipment, or any precision optics.

For cleaning glasses, camera and camera lenses, computer monitors, mobile phone displays, telescopes, CDs, etc., just make sure to use **Sunbeam Optic**, dry or slightly damp.

Sunbeam Duo consists of two differently coloured cleaners. One is recommend for use in the kitchen, while the other one is much better suited for cleaning the bathroom and the rest of the household.

Sunbeam XXL has many applications. It can be used just like maller Sunbeams or, for example, for frosting floors of all kinds, for wiping and polishing the car body or for drying pet hair.

APPLICATION

Sunbeam cleaner should be used dry or damp (damp is more absorbent) to collect any residual water left on the surface after using a white or beige material. Make sure to have the cleaner rinsed off now and again in clean water, while in the case of heavy soiling, NanoSilver antibacterial soap might be used. To be washed manually with Nano Silver antibacterial soap added, or in an automatic washing machine at a temperature of up to 60°C, using any regular washing powder, with no rinsing liquids whatsoever. Not to be dried in automatic dryers, or on the radiators.

SUNBEAM SPORT - MICROFIBRE TOWEL

Sunbeam Sport is a practical, multifunctional towel made of the best microfibres of only 10 micrometers thickness, augmented with NanoSilver particles, extremely effective in inhibiting the development of all microorganisms. The towel is suitable for any places particularly exposed to the infestation with viruses, bacteria and fungi, where maintaining overall hygiene is of paramount importance.

The three-layered arrangement of the microfibres ensures that water and dirt penetrate and that the fabric surface remains clean. That's why Sunbeam SPORT is perfect for after a swim at home, at the pool, on the beach, at the gym, in the spa, in the sauna or on the move.



Absorbs bodily odours
e.g. the ones caused
by intense exertion



High absorbability of the fabric ensures intensive absorption of residual moisture from the surface of the skin and hair, unlike any regular towels. Moreover, Sunbeam SPORT effectively absorbs unpleasant odours from the skin, e.g. during intense exercise. The hard-wearing, abrasion-resistant fabric allows the towel to be used for many years without losing its excellent qualities, plus it takes up very little space in your luggage..

TOWEL CARE:

After use, rinse the Sunbeam SPORT towel in water, preferably with Nanosilver natural soap added. Machine washable in up to 60° C, with no water softeners added.

Wariants:



White



Grey



Pink



Blue



REUSABLE



ALL SKIN TYPES



ECOBODY Care



WORKS WITH WATER ONLY



0% WASTE

ECOBODY Care

Home care has never been easier! Take care of your body and skin with ECOBodycare products, without leaving your home.

In the hustle and bustle of everyday life, it's easy to forget how important body care is. But regular application of the right treatments is essential to keep your skin in good condition - and this is important not only for your appearance!

The skin is the body's key protective barrier and to keep it smooth, supple and healthy, it needs special care. The first step is a proper diet, based on products free of pesticides, antibiotics and other unhealthy chemicals. The second step is to use care products without chemical additives.

With Raypath, you are closer to beautiful skin than ever before, and the skincare revolution is waiting at your fingertips! Choose your favourite cleanser that doesn't irritate your skin at the same time.

The cleansing gloves were created from a combination of natural fibres and modern technology. It is the ideal way to take care of your skin effectively and gently - without artificial, chemical additives and preservatives, parabens, artificial colourings, silicones, PEGs or petroleum derivatives in order to protect, nurture and beautify in harmony with nature.

ECOBODY CARE



Make-up remover glove Face Glove

Waterproof makeup? No problem with the Face Glove cleaner! A moment is enough to enjoy the cleansed skin of the face without irritation. Extremely soft and delicate fabric of which the Face Glove is made will help you get rid of excess sebum and maintain the hydro-lipid balance.



Make-up removal and skin care in one



REUSABLE



ALL SKIN TYPES



WORKS WITH WATER ONLY



0% WASTE

Peeling glove Face Cleaner

Visibly cleansed and radiant complexion from the very first use! The Face Cleaner will help you safely remove keratinized epidermis cells. In addition, while cleansing, it will provide a relaxing massage of the face and neckline. A moment is enough to enjoy a flawlessly smooth, elastic and moisturized skin.

Thanks to the Face Cleaner, you can activate your skin's natural potential, stimulating the production of cells containing NMF - a natural moisturizing factor. It is responsible for absorbing water and maintaining proper skin hydration, thanks to which your complexion radiates glow!



Smooth skin in the blink of an eye



REUSABLE



ALL SKIN TYPES



0% WASTE

4 STEPS TO GET A PERFECT SKIN WITH FACE GLOVE



1.

Moisten Face Glove with plenty of water.



2.

Then massage the face and neck with the Face Glove in circular movements.



3.

Wash Face Glove with Natural Soap with Nanosilver or wash in max. Temp. 60°C.



4.

Hang up to dry and your Face Glove is ready to use again.

4 STEPS TO GET A PERFECT SKIN WITH FACE CLEANER



1.

Moisten Face Cleaner with plenty of water.



2.

Then massage the face and neck with the Face Cleaner in circular movements.



3.

Wash Face Cleaner with Natural Soap with Nanosilver or wash in max. Temp. 60°C.



4.

Hang up to dry and your Face Cleaner is ready to use again.

Peeling and body massage glove Body Cleaner

Enjoy smooth and supple skin with the Body Cleaner glove! It is with its help that you will remove dead skin cells, impurities, and most of all, you will deal with unwanted cellulite! The combination of massage and peeling with the Body Cleaner glove improves blood supply and oxygenation of the skin, which increases the absorption of nutrients. The glove is suitable for both dry and wet massage. You will notice the results after just a few days of using it.



REUSABLE



ALL SKIN TYPES



0% WASTE

Body wash glove Body Glove

A clean and relaxed body every day! The Body Glove will allow you to carry out daily care without skin irritation! A gentle massage stimulates your body, improves blood supply to the skin and oxygenates it by expanding its pores and opening the sweat glands. As a result, the skin is more elastic and its condition improves. All this is possible thanks to the combination of the Body Glove and water.



REUSABLE



ALL SKIN TYPES



WORKS WITH WATER ONLY



0% WASTE

Hang up to dry and your Body Glove is ready to use again.

4 STEPS TO GET A PERFECT SKIN WITH BODY CLEANER



1.

Moisten Body Cleaner with plenty of water.



2.

Then massage the whole body with the Body Cleaner in circular movements.



3.

Wash Body Cleaner with Natural Soap with Nanosilver or wash in max. temp. 60°C



4.

Hang up to dry and your Body Cleaner is ready to use again.

4 STEPS TO GET A PERFECT SKIN WITH BODY GLOVE



1.

Moisten Body Glove with plenty of water.



2.

Then wash the whole body with the Body Glove in circular movements.



3.

Wash Body Glove with Natural Soap with Nanosilver or wash in max. temp. 60°C



4.

Hang up to dry and your Body Glove is ready to use again.

Face cream Golden Ray

Enjoy a smooth and beautiful complexion! The unique formula contains a complex of concentrated active ingredients that deeply rebuild skin and fill in wrinkles. The elastin, inulin and hyaluronic acid it contains are responsible for hydration as well as the reconstruction of the connective tissue of the skin. Skin regeneration is possible thanks to the action of valuable bio minerals and Centella Asiatica, known as the elixir of youth. Syn@Col easily penetrates into the deeper layers of the skin, contributing to its smoothness and elasticity.

Extremely strong moisturizing and building effect



ALL SKIN TYPES



DEEP MOISTURIZED THE SKIN



STRONGLY REGENERATES, REBUILDS AND HAS ANTI-WRINKLE PROPERTIES



SYN@COL

A peptide restoring smoothness and suppleness to the skin. Effective for all types of wrinkles, easily penetrates the deeper layers of the skin, boasts outstanding firming and lifting properties.

HYALURONIC ACID

An excellent natural moisturiser, prevents excessive dryness of the skin by way of restoring its adequate hydration level, thus appreciably improving its firmness and elasticity.

ELASTIN

A protein responsible for the skin's youthful appearance. Boasts an ability to rebuild the connective tissue, restores an adequate level of hydration, significantly improves its elasticity, and gives it a fresh, radiant look.

CENTELLA ASIATICA

A valued Indian elixir of youth containing phytohormones. It intensively stimulates natural regenerative processes in the skin, while delaying its aging; instrumental in removing all toxic substances.

CALCIUM, COPPER AND SILICON

Valuable bio-minerals, boast an extraordinary regenerative potential for mature skin, deeply rebuild it, and enhance its resistance to aging processes.

INULIN

A valuable plant prebiotic; it protects, supports and stimulates the growth of natural bacterial microflora and prevents irritations of the skin. An effective moisturiser and conditioner.

PRODUCT ADVANTAGES:

Strongly moisturizing and building, thanks to a synergic action of the cream's ingredients. Younger skin is visibly strengthened, and older skin - visibly smoothened. Regularly used, it guarantees a deep, long-lasting moisturizing effect, increases the skin's own activity and visibly strengthens its protective barrier, making it more resistant to the harmful effects of external factors. This cream makes the skin optimally moisturized, smooth, firm and incredibly pleasant to the touch.

APPLICATION:



Use the cream every morning and evening on a cleaned (with a Face Glove cleaner) the skin of the face and neck. It works perfectly as a make-up base.

Natural soap with nanosilver

Natural Soap with Nanosilver cleans the skin of the whole body, including the scalp. Used in everyday care, it has a bactericidal, fungicidal and virucidal effect. It prevents of skin lesions development and effectively helps in the treatment of existing ones.

Unlike traditional soaps, it does not disturb the natural protective barrier of the epidermis. It combines exceptional cleansing action with gentle care, leaving skin soft and deeply cleansed.



Eliminates bacteria, viruses and fungi



NATURAL PH OF THE SKIN



ALL SKIN TYPES



NOT CONTAIN DETERGENTS



FRAGRANCES FREE

PRODUCT ADVANTAGES:

- It contains mild cleansing substances, which do not remove the natural hydro-lipid barrier of the epidermis;
- It perfectly cleanses off dirt;
- Thanks to the nano-silver content, it has an antibacterial effect.

Water with nanosilver

In our offer you will also find water with nanosilver and alcohol-based spray with added nano-silver, which effectively inhibits the growth and elimination of microorganisms, i.e. bacteria, viruses and fungi.

Our sprays are reliable when travelling, as well as at home and in public places.

APPLICATION:

For external use. Spray onto pre-washed, degreased surfaces or washed fabrics (recommended Raypath Nano Silver Technology cleaners and Raypath Natural Soap). Allow to dry.



Eliminates bacteria, viruses and fungi



100% NATURAL



BIODEBRADABLE



THE RITUAL



VEGAN PRODUCTS



EFFICIENT



NO PHOSPHATES

THE RITUAL

Discover The Ritual - a specialised line of products for daily care. Nature offers us many precious and beneficial substances, which is why our cosmetics are based on natural active ingredients. Start your daily care with Raypath and make it your favourite ritual

Opt for natural care and live in harmony with nature.

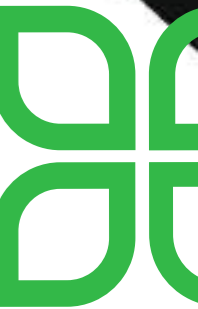
Substances used in the production of natural cosmetics are mainly of plant origin, obtained from ecological cultivation - oils, plant waters, i. e. the so-called hydrolats and natural extracts. Silicones, preservatives and aggressive substances are replaced by mild cleansing agents derived from renewable raw materials to extend shelf life.

Additionally, essential oils are used in natural cosmetics, which are safer than artificial fragrances that cause allergic reactions.

In our offer you will find exclusive body and hair care products that have been created based on natural ingredients. Unique formulas with nano-silver, sea algae caviar and exotic dracaena resin will allow you to discover your natural beauty!

Reach for The Ritual line today.

THE RITUAL



NANOSILVER CARE

NATURAL TOOTHPASTE WITH NANOSILVER

The innovative formula of the NATURAL TOOTHPASTE NANOSILVER CARE paste has been developed to support your daily oral care. Hydroxyapatite contained in it improves the processes of remineralization of tooth enamel, creates a protective layer on its surface and prevents plaque build-up. Other active ingredients inhibit the growth of bacteria that cause caries, as well as prevent periodontitis. Peppermint oil soothes and soothes irritations of the oral mucosa, leaving a long-lasting feeling of freshness.



Natural toothpaste effectively strengthens and cares for teeth



PREVENTS TOOTH ENAMEL
AND STRENGTHENS TOOTH TISSUE



HAS WHITENING
AND REMINERALIZING PROPERTIES



REDUCES
TOOTH SENSITIVITY



REFRESHING, MINTY FLAVOUR

▶ HYDROXYAPATITE

It is a mineral that forms the scaffolding of connective tissue, which is responsible for bone strength.

▶ NANOSILVER

It has bactericidal, fungicidal and virucidal properties

▶ XYLITOL

It prevents tooth decay and strengthens tooth tissues, is a natural birch sugar that balances pH in the mouth. Thanks to its properties, xylitol reduces the number of bacteria in the mouth that cause caries.



**NANOSILVER
& GREEN CAVIAR**
NORMAL HAIR

The line of intensive regenerating, exclusive hair and scalp care products takes care of their hydration and strengthening at the highest level. By combining carefully selected active ingredients, the shampoo and conditioner give your hair a wonderful shine, restore its vitality and youthful appearance, and make your daily care an experience of luxury.

PANTHENOL

It moisturises the hair and scalp, adds softness and shine.

VITAMIN C, E

They have an antioxidant effect and therefore protect the hair and scalp from free radicals.

HYDROLYZED PEA PROTEIN

They strongly moisturise, increase elasticity and reduce hair fragility, protecting it from damage.

GREEN CAVIAR EXTRACT

Extract of botanical origin from seaweed, which has strong moisturising and regenerating effects.

NANOSILVER

It has an antiseptic and anti-inflammatory effect on the scalp.

SUNFLOWER OIL

It moisturises, strengthens and gives shine.

SWEET ALMOND OIL

Rich in vitamins, mineral salts and fatty acids, it nourishes and gives hair shine.

*Rich in moisturising
and strengthening
ingredients for hair*



S H A M P O O

Intensely regenerating shampoo with sea algae caviar and nanosilver, ideal for the care of normal hair. A special formula gently cleanses the scalp, regenerates damaged hair structure and leaves it nourished and full of shine!

C O N D I T I O N E R

Intensely regenerating conditioner with sea algae caviar and nanosilver is intended for the care of normal hair. The innovative formula deeply moisturizes, tones and smoothens the hair. In addition, it protects it against the harmful effects of UV rays and brings out their natural glow.



**NANOSILVER
& DRAGON'S BLOOD**
DRY AND
DAMAGED HAIR

A line of cosmetics for dry and damaged hair. Intensively strengthening shampoo and conditioner increase the level of hair hydration, giving it long-lasting smoothness, softness and shine. It protects against environmental damage and keeps hair looking beautiful from root to tip.

PANTHENOL

It moisturises the hair and scalp, adds softness and shine.

VITAMIN C, E

They have an antioxidant effect and therefore protect the hair and scalp from free radicals.

HYDROLYZED PEA PROTEIN

They strongly moisturise, increase elasticity and reduce hair fragility, protecting it from damage.

NANOSILVER

It has an antiseptic and anti-inflammatory effect on the scalp.

DRAGON'S BLOOD EXTRACT

Extract from Calamus Draco palm resin with strong antioxidant and anti-pollution properties, improves hair elasticity.

AVOCADO OIL, OLIVES

A rich source of vitamins and unsaturated fatty acids, it moisturises and makes hair supple, shiny and healthy looking.

PHYTOSTEROLS

They nourish and strengthen hair follicles and hair, providing shine and a healthy appearance.

SHEA BUTTER

It nourishes, moisturises and smoothens hair and protects it from sun rays.

*Rich in moisturising
and strengthening ingredients
for hair*



S H A M P O O

Moisturizing and strengthening shampoo with Dragon's Blood extract and nanosilver for the care of dry and damaged hair. A special formula based on natural ingredients gently cleanses the scalp, smoothens the hair structure and gives it volume. The Dragon's Blood extract contained in it has antioxidant properties, and additionally improves the hair elasticity.

C O N D I T I O N E R

Intensely moisturizing conditioner for dry and damaged hair with Dragon's Blood extract and nanosilver. Deeply moisturizes and cares. Makes detangling easier. Makes hair silky smooth and pleasant to the touch.



100% EFFICIENT



BIODEGRADABLE

nanosilver power - biodegradable household cleaners

Keep your household safe and comfortable with Raypath International. We offer carefully selected, biodegradable laundry and cleaning products to make your daily chores easier. Antibacterial products will help you to keep your home and clothes clean and comfortable for allergy sufferers. We have everything you need for a safe home.

Raypath offers biodegradable products for laundry, disinfection and home care. Our priority is high quality, which is why Raypath formulations have been developed with efficiency and safety in mind, using the best components.

Use the combined power of nature and the latest, most advanced technology to surround yourself with the caring power of cleanliness. Comfortable, effective and safe - for you, your household and the environment.



NO PHOSPHATES



EFFICIENT



NANOSILVER POWER

NANOSILVER POWER



natural dishwasher gel

Natural Dishwasher Gel with the addition of nanosilver is a unique formula that will make your dishes shine! The gel is great at dealing with tough dirt, even in short washing cycles. Its unusual composition protects the dishwasher against limescale deposits, absorbs unpleasant odors and dissolves the remaining food residues in it. Enjoy your clean, streak-free, sparkling dishes thanks to our dishwasher gel.

PRODUCT ADVANTAGES:

- It removes tough dirt;
- It prevents corrosion of steel and glass;
- It gives your dishes a flawless shine;
- It dissolves food residues and protects the dishwasher from limescale build-up.

It is effective thanks to its active cleaning ingredients



natural toilet bowl cleaner

Extremely efficient and thickened Natural Toilet Bowl Cleaner is a cleaning and whitening agent designed for effective cleaning of toilets and bathroom fittings. It protects against lime-scale and other dirt deposits. Regular use of Natural Toilet Bowl Cleaner allows you to get rid of up to 99.999% of bacteria and keep your bathroom hygienically clean. The special formula of the gel is perfect for cleaning hard-to-reach places.

PRODUCT ADVANTAGES:

- It removes up to 100% of scale;
- It works even below waterline;
- It cleans organic impurities very well, kills bacteria, viruses and fungi;
- It adheres to the toilet surface longer, even after flushing;
- It contains nanosilver particles, which have antibacterial, antifungal and antiviral properties.

Natural toilet cleaner surprises with its fragrance and immediate effectiveness



concentrated fabric softener

Concentrated Fabric Softener with nanosilver gives incredible softness and freshness to your clothes. Thanks to the unique fragrance, contained in every drop of concentrated liquid, the pleasant smell will delight you with every movement of the fabric. Even a small amount of the softener's innovative formula will allow you to wrap yourself in a soft aroma of freshness without irritating the skin.

Not to be used with Raypath cleaners.

PRODUCT ADVANTAGES:

- Gives your clothes a pleasant, long-lasting fresh fragrance;
- Reduces static in clothes;
- Gives the fabrics freshness and extraordinary softness;
- Reduces the risk of skin irritation and allergies.



concentrated washing liquid white

Concentrated Washing Liquid - White with nanosilver removes even the most stubborn stains, giving your clothes a new shine. Carefully selected active ingredients penetrate deep into the fibers, removing even the smallest particles of stains, and a special formula containing optical brightener protects your clothes from graying, renews whiteness and helps them stay brilliant for longer. Perfect cleanliness and long-lasting freshness will make you love your clothes again.

PRODUCT ADVANTAGES:

- Removes even the most stubborn stains by penetrating deeply into the fibers;
- Helps protect white clothes from turning gray thanks to an innovative formula that maintains their new look for longer;
- Gives your clothes a pleasant, fresh and long-lasting fragrance.



concentrated washing liquid colour

Concentrated Washing Liquid - Colour with nanosilver removes even the most stubborn stains, giving your clothes a new shine. Carefully selected active ingredients penetrate deeply into the fibers, removing even the smallest particles of stains, and the special formula maintains the vivid color of clothes for longer, preventing them from turning gray and fading. Perfect cleanliness and long-lasting freshness will make you love your clothes again.

PRODUCT ADVANTAGES:

- Removes even the most stubborn stains by penetrating deeply into the fibers;
- Helps to protect the color of your clothes from fading and graying, maintaining its brilliance over many washes;
- Gives your clothes a pleasant, fresh and long-lasting fragrance;
- It is extremely gentle on fabrics and unforgiving on dirt.



Concentrated liquid with nanosilver preserves the vivid colours of your clothes



concentrated washing liquid black

Concentrated Washing Liquid - Black with nanosilver removes even the most stubborn stains, giving your clothes a new shine. Carefully selected active ingredients penetrate deep into the fibers, removing even the smallest particles of stains, and the unique gel formula makes the black retain its depth and intensity. Perfect cleanliness and long-lasting freshness will make you love your clothes again.

PRODUCT ADVANTAGES:

- Removes even the most stubborn stains by penetrating deeply into the fibers;
- Prevents black and dark fabrics from fading, even after many washes;
- Gives your clothes a pleasant, fresh and long-lasting fragrance;
- It is extremely gentle on fabrics and unforgiving on dirt.



Concentrated liquid with nanosilver, gentle on fabrics





100%
INGREDIENTS
OF NATURAL ORIGIN



NO PRESERVATIVES
OR COLOURINGS

FOOD SUPPLEMENTS

High quality dietary supplements based on natural ingredients will help you take care of your fitness, immunity or well-being. Our products, rich in valuable active ingredients, support weight loss, cleanse the body, as well as improve concentration and brain function. Additionally, the SMART line supplements will help you replenish vitamin deficiencies resulting from an ill-balanced diet.

The formulas of our products have been developed by specialists and dieticians who have selected the highest quality ingredients for this purpose. Thanks to this we are sure that the products we offer you are effective and above all safe. Active forms of substrates of high assimilability will help you take care of your and your family's health. Start using supplements from the SMART line today and enjoy great wellbeing.



S M A R T

FOOD
SUPPLEMENTS



ACTIVE FORMS
OF HIGHLY BIOAVAILABLE
INGREDIENTS



PROPRIETARY FORMULAS
AND HIGH EFFECTIVENESS

FOOD SUPPLEMENTS



VITAMIN C S M A R T

Vitamin C is essential for the body to function properly, while a deficiency can lead to serious illnesses.

Out of concern for your health we have created a Vitamin C SMART dietary supplement containing extracts of rosehip, ginger rhizome and long thistle, which are rich in vitamin C.




PROTECTS CELLS
FROM OXIDATIVE STRESS


HELPS MAINTAIN
A GOOD MOOD


SUPPORTS THE
IMMUNE SYSTEM


AFFECTS SKIN
AND BONE HEALTH



Unique composition
of vitamin C with turmeric
and ginger extracts



GINGER

- It supports digestion;
- It strengthens the immune system;
- It lowers blood pressure.

ROSA CANINA

- Anti-inflammatory, antibacterial and antiviral;
- protects cells from oxidative stress;
- It supports the proper functioning of the urinary system.

TURMERIC

- It lowers blood sugar and cholesterol levels;
- It strengthens immunity and fights infections;
- It protects the mucous membranes of the gastrointestinal tract;
- It accelerates wound healing processes.

THE CONTENT OF INGREDIENTS BASED ON RECOMMENDED DAILY DOSE - 1 CAPSULE:

ACTIVE SUBSTANCES	QTY OF ACTIVE SUBSTANCE (MG)	QTY OF RAW MATERIAL (MG)
Rosehip extract (<i>Rosa canina</i>) standardized for 70% of vitamin C	385 vitamins C	550
Ginger rhizome extract 4:1	50	50
Turmeric extract 4:1	50	50
Additional substances		
Calcium carbonate	-	33
Capsule shell		
Hydroxypropyl methylcellulose	-	133

NRV*- nutrient reference value- no daily reference intake value has been established

DETOX SMART

Stressful lifestyle, unhealthy diet or lack of physical activity can overload the body with toxins that hinder proper functioning. If you are chronically tired, you don't get enough sleep, and your condition has deteriorated significantly, it's time to change something. Take care of yourself today and start your metamorphosis with Detox SMART!



Formulated with natural plant extracts



IMPROVES THE FUNCTION OF INTERNAL ORGANS



IMPROVES THE APPEARANCE OF THE SKIN



FACILITATES THE LOSS OF EXCESS WATER FROM THE BODY



IMPROVES ABDOMINAL FAT REDUCTION



FENNEL ROOT EXTRACT

- It supports digestion;
- It has antioxidant properties;
- It lowers blood pressure.

DANDELION EXTRACT

- It lowers blood sugar and cholesterol levels;
- Enhances metabolic processes;
- It supports the pancreas and liver in the detoxification process.

MILK THISTLE EXTRACT

- It supports liver function;
- It contributes to lowering blood cholesterol levels;
- It increases the body's immunity.

NETTLE EXTRACT

- It has a beneficial effect on the pancreas, liver and stomach;
- It reduces blood sugar levels;
- It strengthens the immune system;
- It supports the excretion of excess water from the body.

THE CONTENT OF INGREDIENTS BASED ON RECOMMENDED DAILY DOSE - 1 CAPSULE:

ACTIVE SUBSTANCES	QTY OF ACTIVE SUBSTANCE (MG)	QTY OF RAW MATERIAL (MG)
Dandelion extract 4:1	80	80
Fennel root extract 4:1	50	50
Nettle extract 4:1	70, including 49 sylimarine	70
Andrographis paniculata extract 5% of andrographolides	100	100
Magnesium salts of fatty acids (anti-caking agent)	20 including 1 of andrographolides	20
Additional substances		
Capsule shell	-	-
Hydroxypropyl methylcellulose	-	95

NRV*- nutrient reference value- no daily reference intake value has been established

FOCUS SMART

The Focus SMART dietary supplement supports memory processes, increases concentration and improves well-being. Its active ingredients help improve sleep quality and reduce the effects of stress. The supplement is recommended for young people in the period of intensified learning, as well as for the elderly.



Made from natural plant extracts



-  HELPS REDUCE STRESS
-  IMPROVES SLEEP COMFORT
-  IMPROVES MEMORY AND CONCENTRATION
-  IMPROVES THE FUNCTION OF THE HEART AND NERVOUS SYSTEM



ASHWAGANDHA

- It improves cognitive functions;
- It strengthens the immune system;
- It helps alleviate the effects of stress.

GINKGO BILOBA EXTRACT

- It supports memory and concentration;
- It supports the circulatory and nervous systems;
- It seals the capillary vessels (especially in the brain).

FINE-LEAVED BACOPA EXTRACT

- It has a calming and soothing effect;
- It helps to alleviate the effects of stress;
- It improves memory processes.

RHODIOLA ROSEA EXTRACT

- It increases serotonin levels;
- It has an immunostimulating effect;
- It alleviates the effects of stress.

THE CONTENT OF INGREDIENTS BASED ON RECOMMENDED DAILY DOSE - 1 CAPSULE:

ACTIVE SUBSTANCES	QTY OF ACTIVE SUBSTANCE (MG)	QTY OF RAW MATERIAL (MG)
Small-leaved bacopa extract	100	100
Rhodiola rosea extract 4:1	100	100
Ashwagandha extract 4:1	100	100
Ginkgo biloba extract, 18% flavoglycosides, 4% terpenic lactones	100 including 18 flavoglycosides, 4 terpenic lactones	100
Additional substances		
Magnesium salts of fatty acids (anti-caking agent)	-	15
Capsule shell		
Hydroxypropyl methylcellulose	-	95

NRV*- nutrient reference value- no daily reference intake value has been established

COLOSTRUM SMART

Colostrum contains a unique combination of mare's colostrum (colostrum) rich in IgG (immunoglobulins) and B vitamins.

Colostrum is the first milk that provides protection and immunity to newborns in the early stages of their lives, when they are exposed to the danger of contact with microbes and bacterial flora.

The mother's colostrum transmits immune substances to them, stimulating growth and protecting the new life from harmful external factors. It contains many important ingredients that are the first and most important source of nutrition for the immune system.



Formulated from natural ingredients of mare colostrum of the Polish origin

- STRENGTHENS IMMUNITY
- SUPPORTS THE NORMALIZATION OF DISORDERS RELATED TO THE IMMUNE SYSTEM
- NORMALIZES THE GUT ENVIRONMENT AFTER INTENSIVE AND CHRONIC ANTIBIOTIC THERAPY
- STRENGTHENS VITALITY



THE CONTENT OF INGREDIENTS BASED ON RECOMMENDED DAILY DOSE - 1 CAPSULE:

ACTIVE SUBSTANCES	QTY OF ACTIVE SUBSTANCE (MG)	QTY OF RAW MATERIAL (MG)
Colostrum 30% IgG	60	200
Vitamin B1 (thiamine hydrochloride)	1,1 tiamin	1,4
Vitamin B2 (riboflavin)	1,4	1,4
Calcium D-pantothenate	6 acid	6,53
Vitamin B6 (pyridoxine hydrochloride)	1,4 vitamin B6	1,7
Vitamin B12 (cyanocobalamin)	2,5µg vitamin	2,5
D-biotin	50µg biotin	0,05
Niacin (nicotinamide)	16	16
Filling substance- microcrystalline cellulose	-	50
Magnesium salts of fatty acids (anti-caking agent)	-	14,42
Additional substances		
Capsule shell	-	-
Hydroxypropyl methylcellulose	-	95

NRV*- nutrient reference value- no daily reference intake value has been established

CHANGE THE WORLD FOR THE BETTER WITH US.
BE **ECO** :)



RAYPATH FOR THE EARTH

For the sake of the environment, we run a system where you can **exchange your old product for a new one** at half price! What's more, used cleaning products will be recycled and gain a new life.

50%

DISCOUNTS

FOR A NEW
PRODUCT, UPON
RETURN OF THE
USED ONE

All you need to do is send them
to the Head Office address:

RAYPATH INTERNATIONAL
SP. Z O.O. SP.K.
Rząska, ul. Nad Potokiem 7A
30-199 Kraków

You will also be pleased to know that Raypath grants an 18-month warranty for its range of household products.

